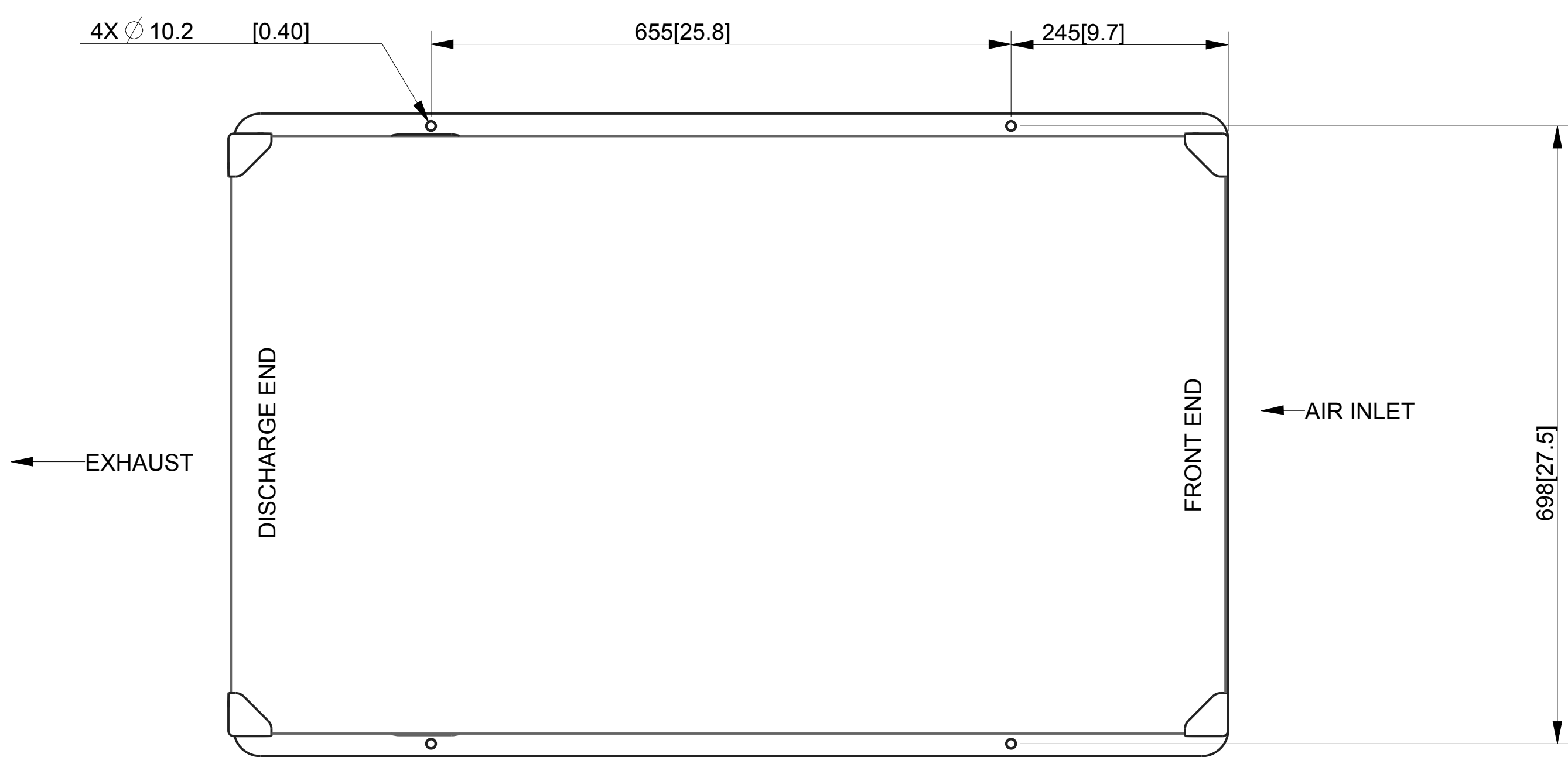
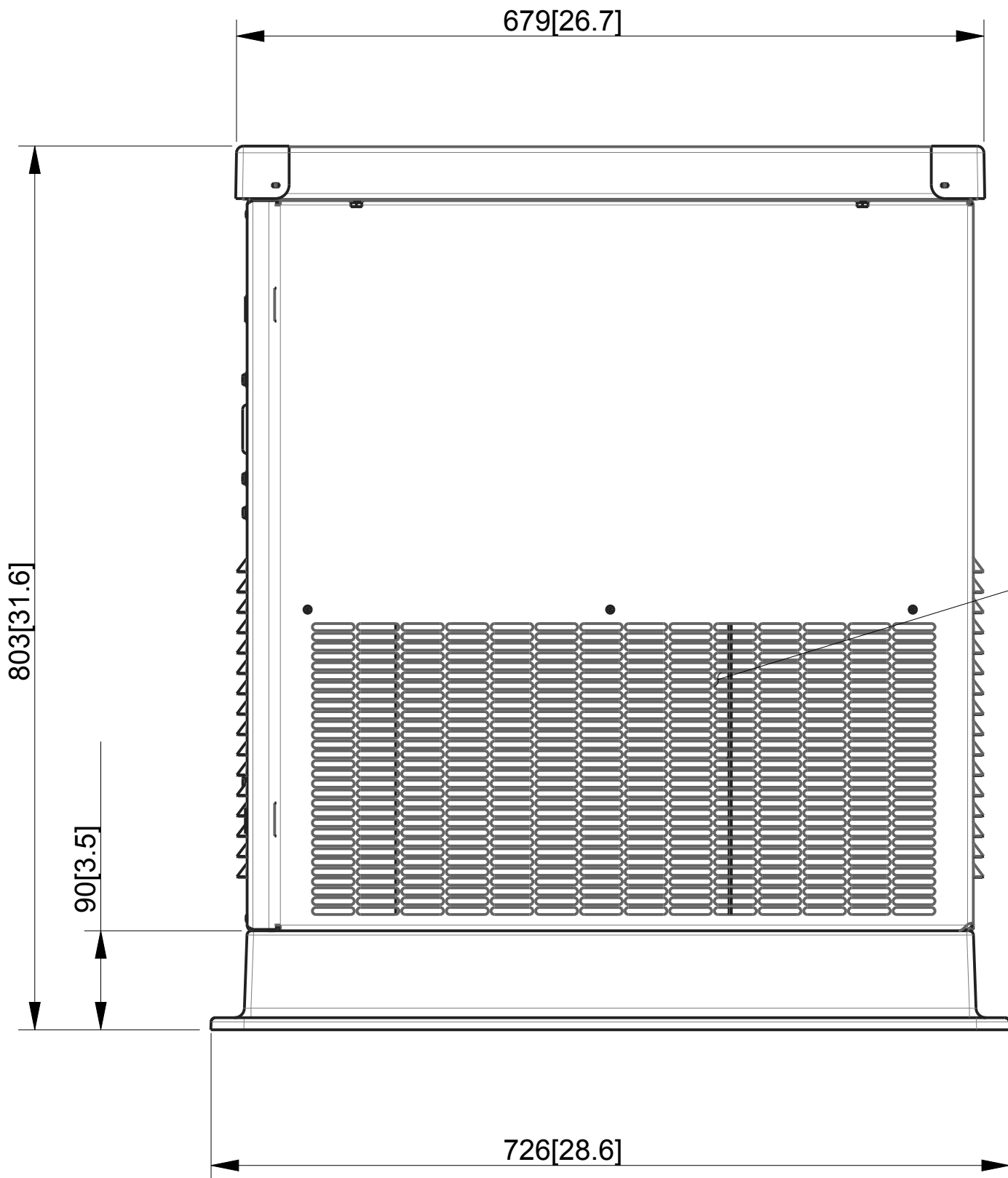
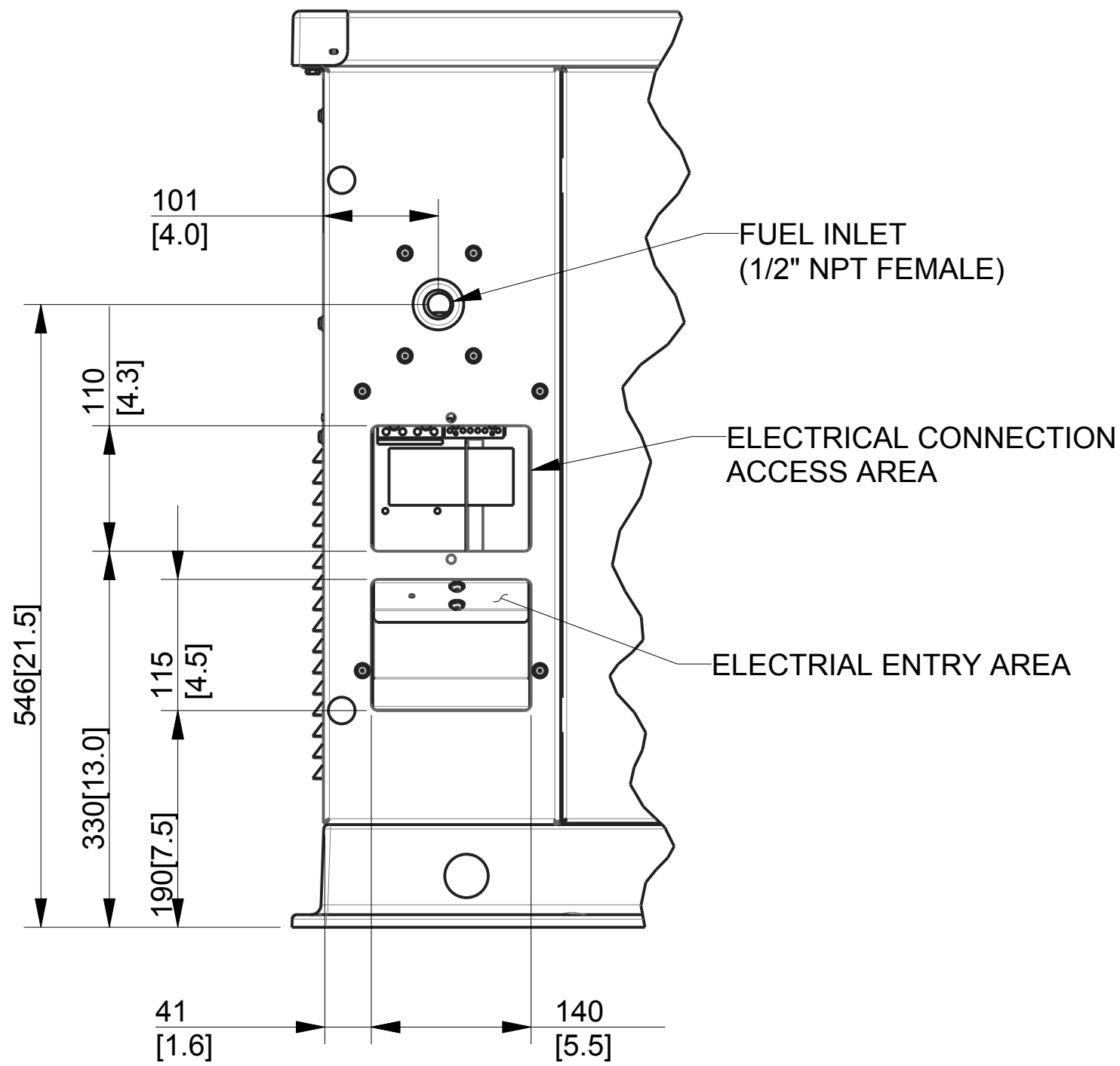


SCALE 0.125

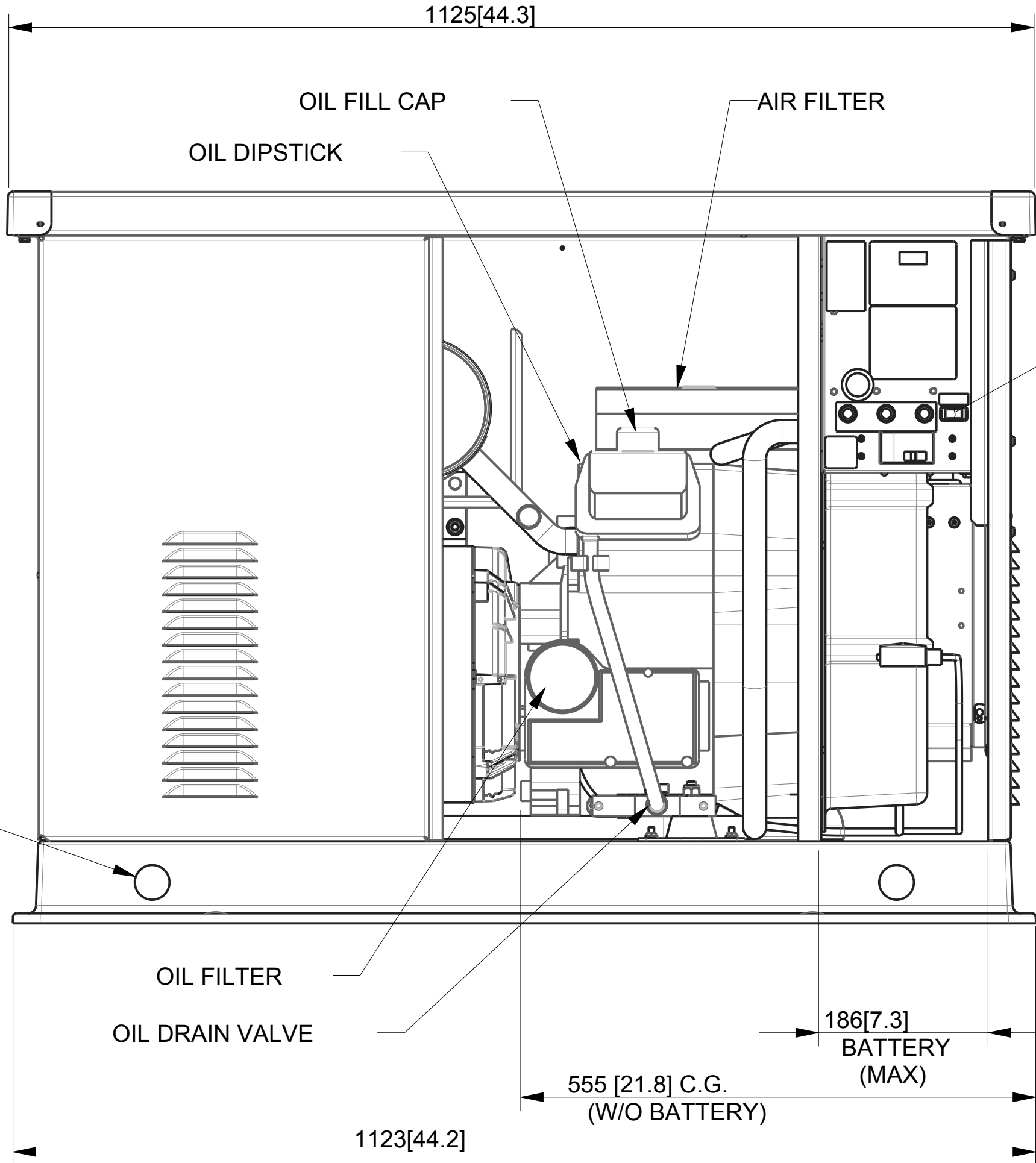


SERVICE DOOR SIDE



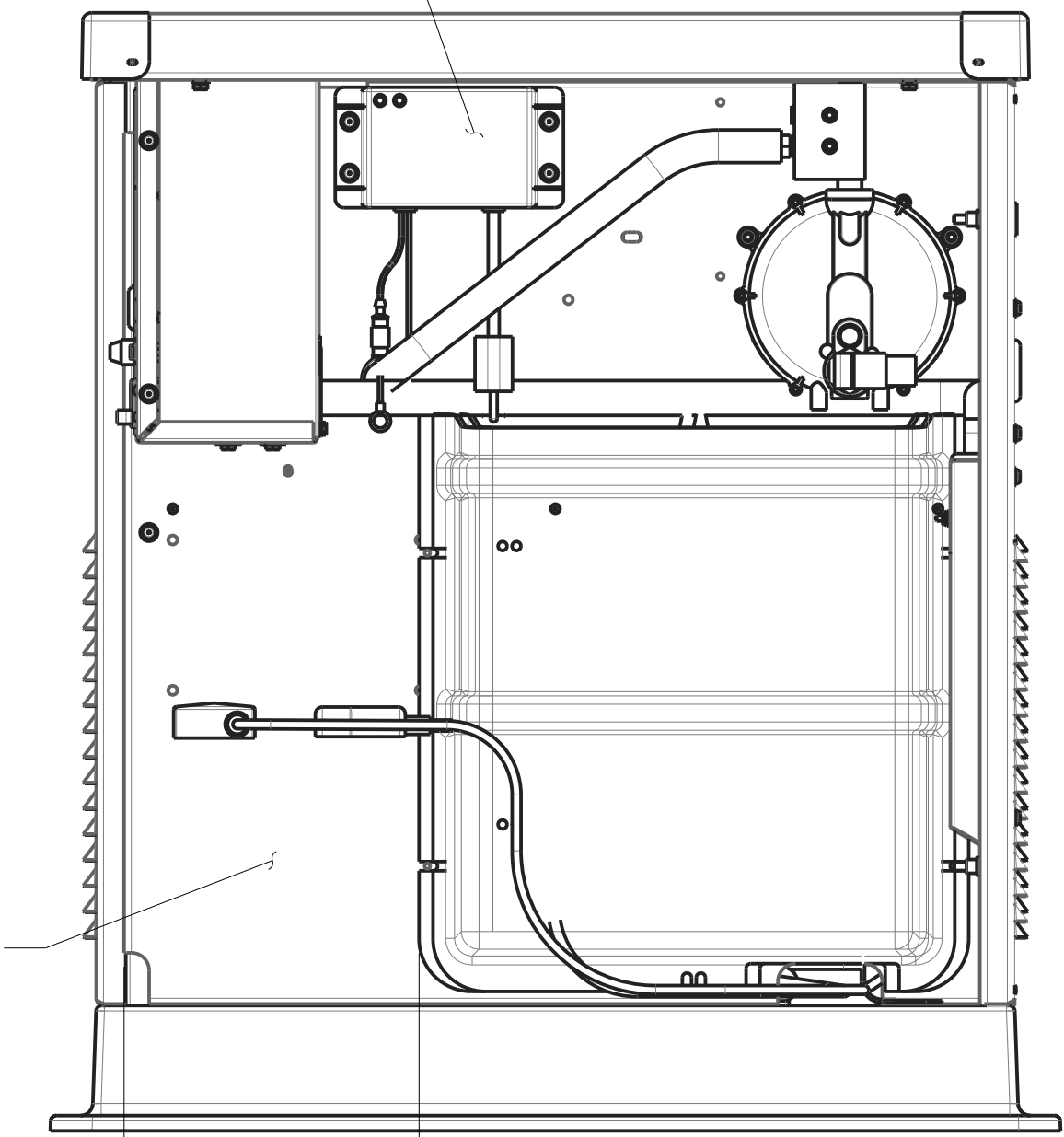
EXHAUST OUTLET

4X Ø 38.1 [1.50]
LIFTING HOLES



FRONT VIEW
(DOOR REMOVED)

BATTERY CHARGER

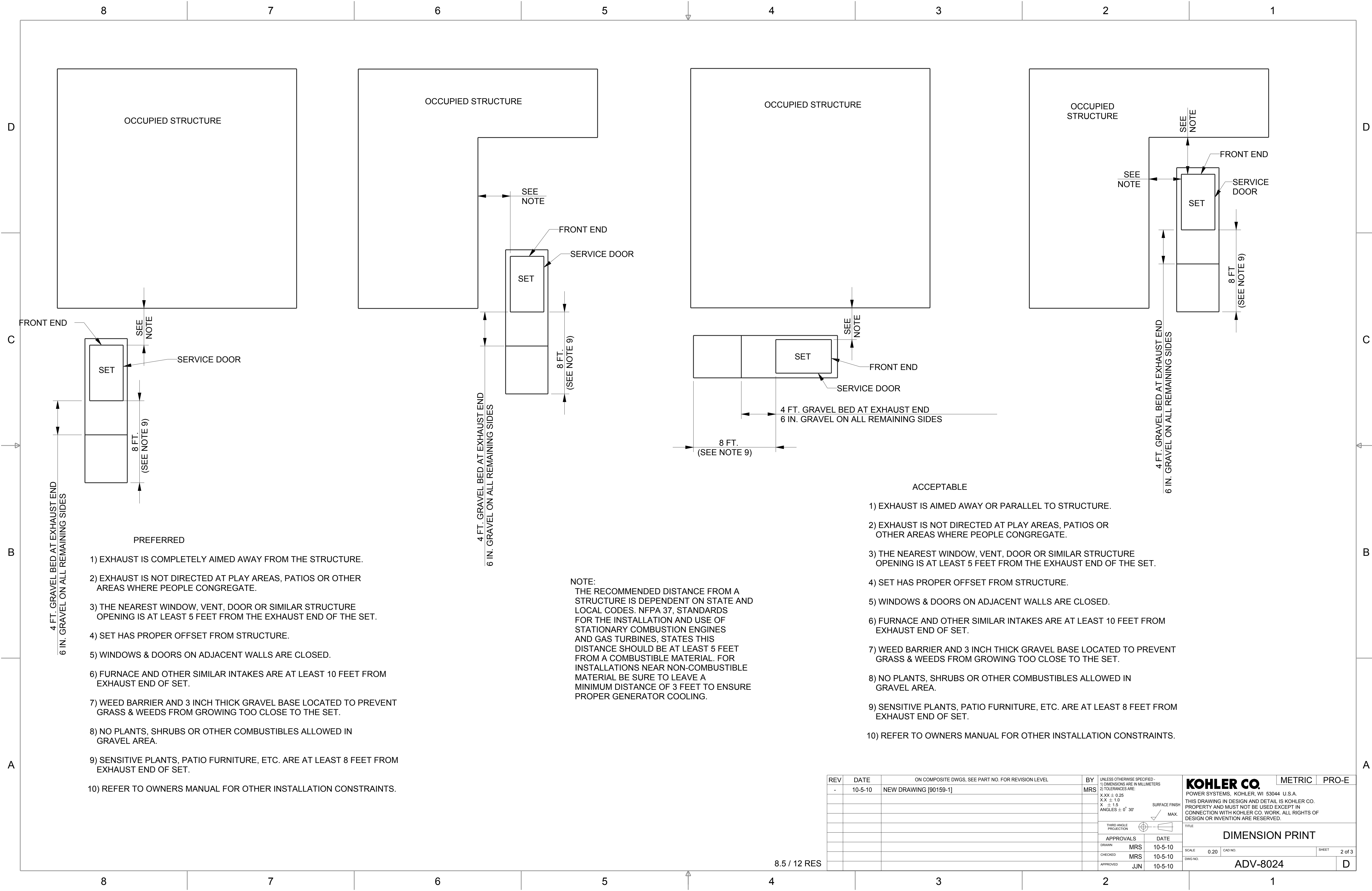


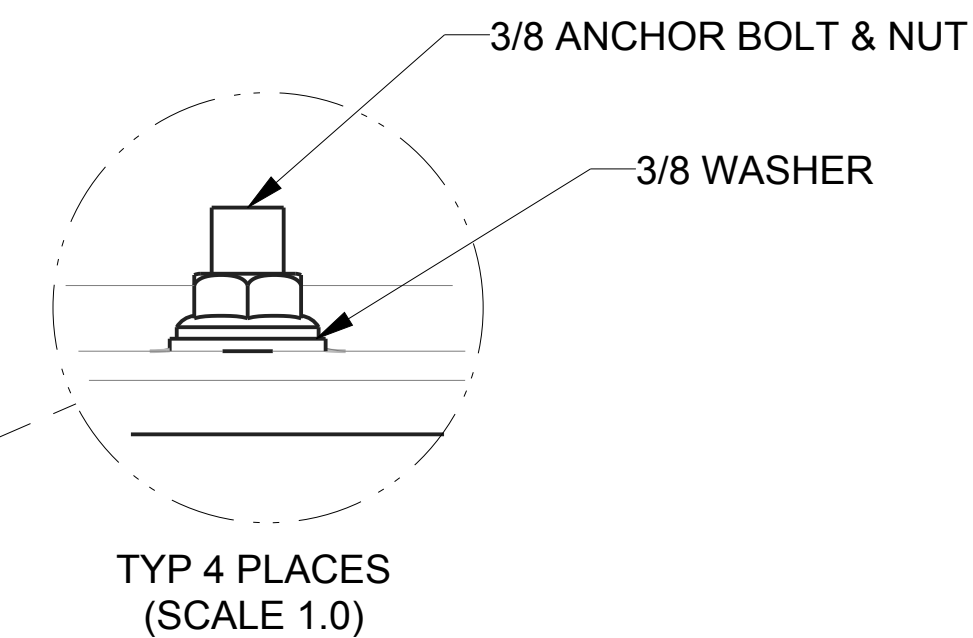
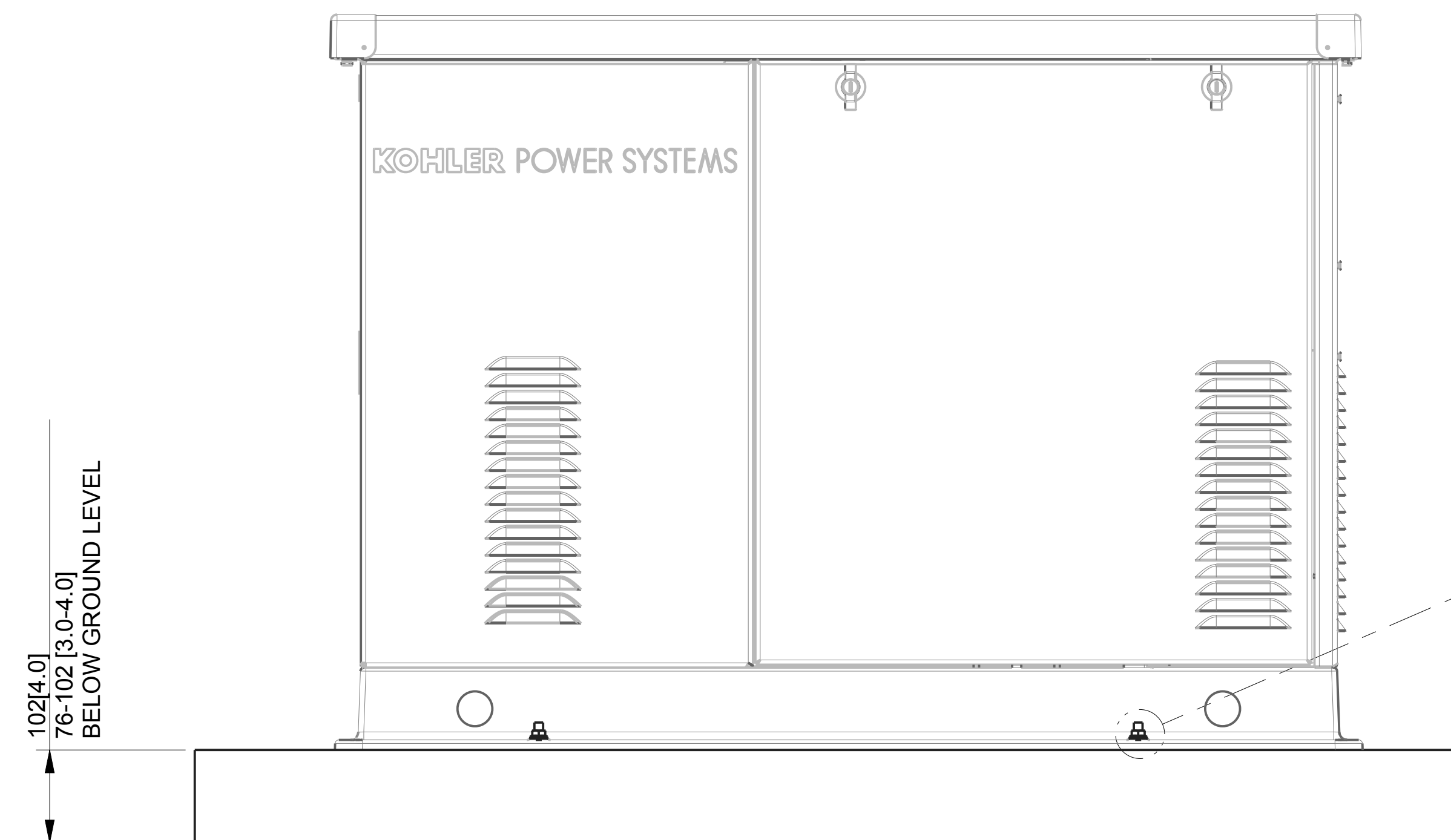
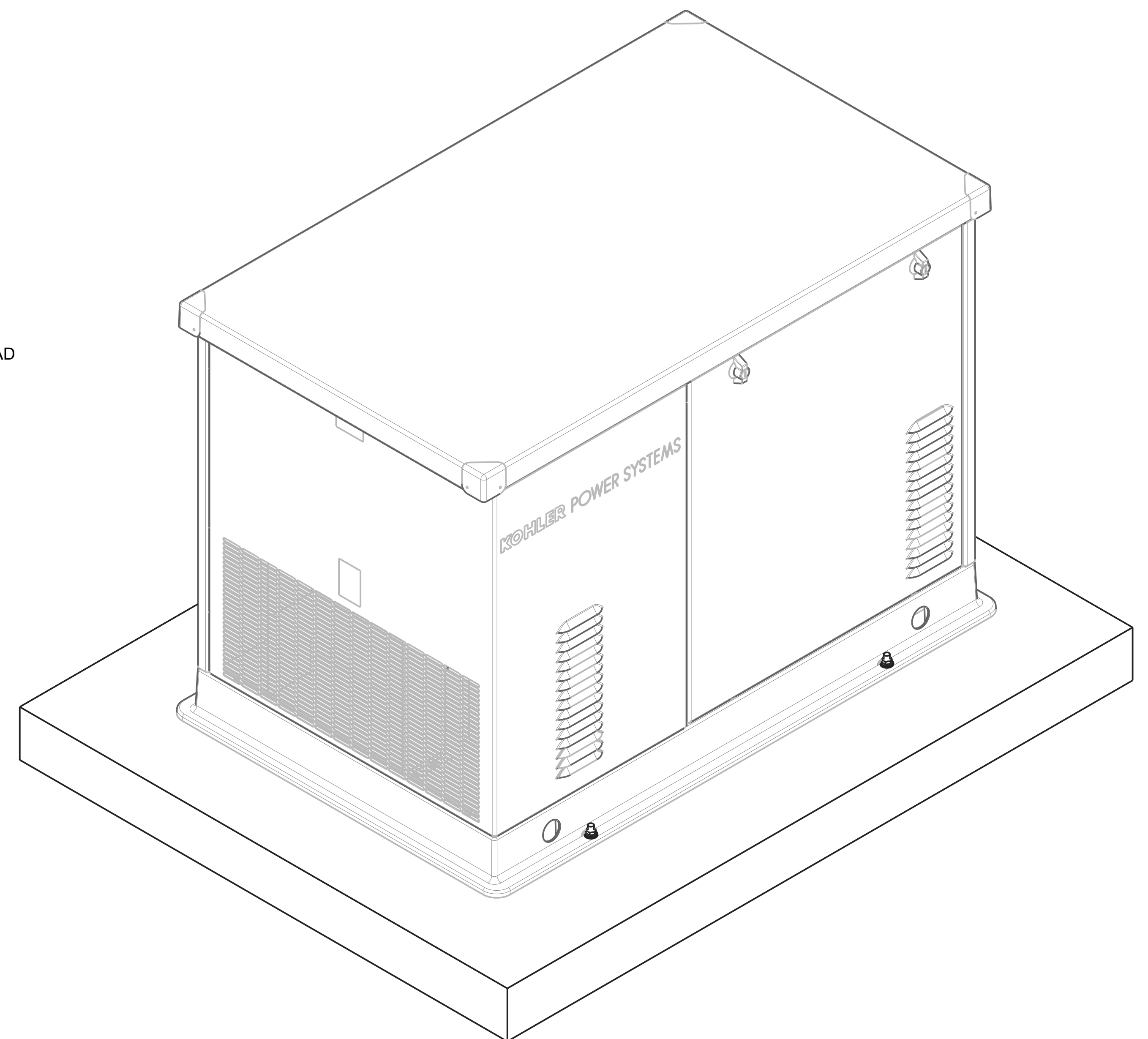
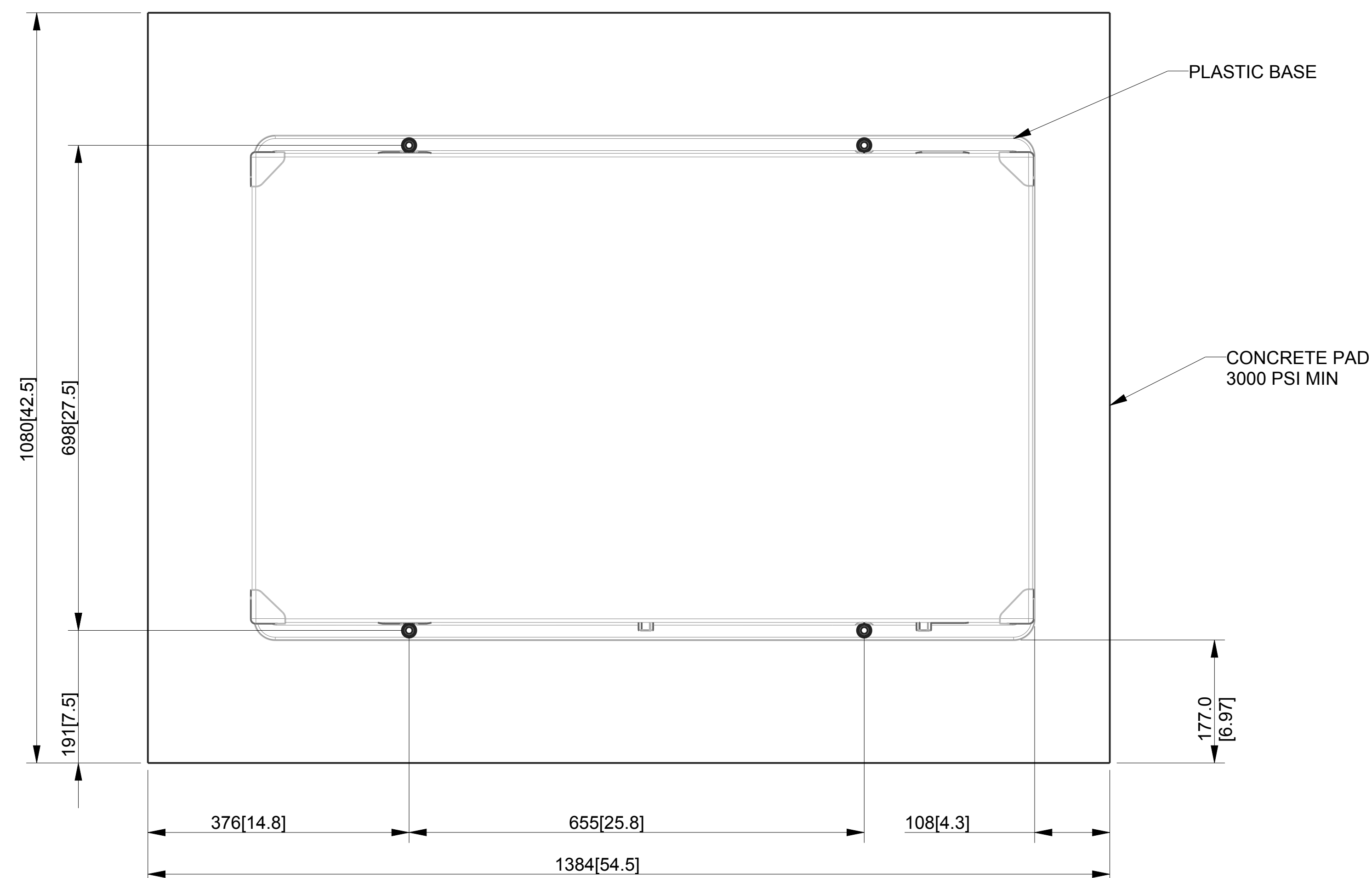
RIGHT SIDE VIEW
(END PANEL REMOVED)

NOTES:
DIMENSIONS IN [] ARE INCH EQUIVALENTS.


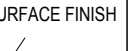
WEIGHT W/O BATTERY: 182KG [400 IBS]

REV	DATE	ON COMPOSITE DWGS, SEE PART NO. FOR REVISION LEVEL	BY	UNLESS OTHERWISE SPECIFIED - 1) DIMENSIONS ARE IN MILLIMETERS 2) TOLERANCES ARE: X.XX ± 0.25 X.X ± 1.0 X ± 1.5 ANGLES ± 0° 30'	THIRD ANGLE PROJECTION	SURFACE FINISH MAX.	TITLE
-	10-4-10	NEW DRAWING [90159-1]	MRS				KOHLER CO. POWER SYSTEMS, KOHLER, WI 53044 U.S.A. THIS DRAWING IN DESIGN AND DETAIL IS KOHLER CO. PROPERTY AND MUST NOT BE USED EXCEPT IN CONNECTION WITH KOHLER CO. WORK. ALL RIGHTS OF DESIGN OR INVENTION ARE RESERVED.
							DIMENSION PRINT
							SCALE 0.20 CAD NO. SHEET 1 of 3
							DWG NO. ADV-8024
							D





NOTE:
 □ BOLTED CONNECTION REQUIREMENTS:
 □ □ SHEAR LOAD 150 LBS/BOLT.
 □ □ PULL OUT FORCE 200 LBS/BOLT.

REV	DATE	ON COMPOSITE DWGS, SEE PART NO. FOR REVISION LEVEL	BY	UNLESS OTHERWISE SPECIFIED - 1) DIMENSIONS ARE IN MILLIMETERS 2) TOLERANCES ARE: X.XX ± 0.25 X.X ± 1.0 X ± 1.5 ANGLES ± 0° 30'	 THIRD ANGLE PROJECTION	 SURFACE FINISH MAX.	KOHLER CO. POWER SYSTEMS, KOHLER, WI 53044 U.S.A. THIS DRAWING IN DESIGN AND DETAIL IS KOHLER CO. PROPERTY AND MUST NOT BE USED EXCEPT IN CONNECTION WITH KOHLER CO. WORK. ALL RIGHTS OF DESIGN OR INVENTION ARE RESERVED.	METRIC	PRO-E		
-	10-5-10	NEW DRAWING [90159-1]	MRS								
							TITLE	DIMENSION PRINT			
							SCALE	0.20	CAD NO.	SHEET	3 of 3
							DWG NO.	ADV-8024		D	

8.5 / 12 RES
150MPH - HIGH WIND
MOUNTING DETAIL